



THE PRES SEZ.....PG 1
GENERAL MEETING
MINUTES.....PG 2
JUNIOR CLUB.....PG 3
WORK DAY PHOTOS...PG 3
MONTHLY MINERAL...PG 4
CLUB HISTORY AND
OFFICERS.....PG 5
WHAT'S ROCKING.....PG 6

The Prez Sez

by David Smith

Welcome to the month of April; the most important month for our club of the year. Thanks to all who have already signed up for shifts at our 59th annual "River of gems Show", in Rickreall on April 18, 19, and 20th. We still have opportunities to sign up at our general club meeting this Thursday. This is our one chance of the year to generate revenue to fund all of our club functions; so please participate in some way. Not only is it important; it's our one big opportunity.

At our last general club meeting we asked for volunteers to step up and fill some open positions; which include, Club Secretary, Chair person on the board for the Oregon Council of BLM, and our field trip coordinator position. Kathy Bennett has filled the Secretary position 5 of the past 7 years; therefore, it's time to hand it over to someone else. There are only 9 months left in the current year; so, it's not even a full year commitment. Volunteers are what keeps a club interesting and fun for everyone. Please help us by stepping up and filling this role so we can move forward and talk about other things.

It appears to me, the field trip coordinator position could be shared by multiple people, where we have rotating leaders to coordinate outings. Field trips can be one of the funnest activities we have, so please let us know if you are interested in leading a trip. Finally; we are looking for another member to take the role of representing WAMS on the board for the Oregon Council BLM Community Session that meets 3 times per year. The next meeting will be held over at the Madras Pow Wow Rock Show in June; on a Saturday at 1:00pm. Vicki Johnson has been representing our Club, but has some family commitments she needs to take care of. This is an important role as well. You get to report to our club about BLM land updates. We can have up to 3 people from our club attend these meetings. The WAMS Oregon Council Representative is also in charge as the case agent at the Capitol Building. They would coordinate the rock display at the State Capitol from member clubs in the Oregon Council, every 6 months. To see what the display case looks like you can visit www.ocrmc.org. The next club to go into the display case in May of 2014, is the Springfield Thunderegg Rock Club. Please step up and volunteer as we can't make it happen without you.

Our new website is up and running, and better than ever. Just go to WAMS1.Org and check out all of the new links. We are looking for anyone to submit rock pictures to JanWhite to enter on our new site on the galleries tab. We also want pictures from your rockhound outings to share with our members. We also hope to start seeing the newsletter posted right on the site as well.

Our "show and tell" letter in April is T. Bring rocks such as thundereggs, tourmaline, tiger eye agate; or from locations like Texas Springs. Leslie will have a program lined up.

**NEXT MEETING
APRIL 3, 2014**

The meeting was called to order at 7 PM by President, Dave Smith. At that time he introduced the officers and then the guests. He announced Ken Buchholz donated 60 buckets to the club which is greatly appreciated. Sign-up sheets are at the front desks and EVERYONE was encouraged to sign up for as much as you can do for the show. There will be another chance to sign up at the next meeting.

Kathy Bennett will be calling members to help fill out the time slots. This is are only money making event for the year so please help as much as you can.

Kristi told about her visit to the Rice Museum. She bought a rock at an estate sale and had it appraised at the event at the Rice Museum and made quite a profit on it.

Next was show and tell for the letter S.

Dave then went over volunteer opportunities for the club. Our new website is running. Jan White is the administrator of the sight. She would like some members to volunteer to answer questions from the website. Let her know if you are willing to answer questions and what your specialty area is.

Some of the volunteer opportunities are secretary, Oregon Council, Chair for the 2015 show, and education and field trip chair.

We then saw a DVD on trees and then took a 15 minute break.

The Business meeting was called to order at 8:10 PM. Phil and Reyne are taking reservations for cases for the show. March 7-9 will be the Tualatin Valley Show. Ken Orndorff resigned from the field trip co-ordinator.

Rock donations are requested for the show. Ethelene announced her goal was to have enough rock ahead for the next year's show. There may be an issue with the egg hunt as they are plowing the field at this time. March 22nd there will be a work party at 10 AM in Corvallis. Kristi will send out directions to those that sign up to help. The sign- up sheet is at the front of the room.

Jackie Lord gave the Treasury report. It was accepted as read. The secretary's reports were printed in the newsletter and accepted as printed. There was no Federation report. Leslie led the lesson today for the juniors. A case will be brought in next meeting for the juniors to see the size so they can be ready with a case at the show.

Leslie Morganstern will start doing programs. Continue giving stamps to Aaron. Jackie read the bills to pay and the vote was to pay the bills.

Jan read the names of two new applicants, John Adams and Steven Early. They were both voted in as new members.

Thank you to Jan White and Reyne Knutson for bringing refreshments. Next month will be Jackie Lord and Ginny Taylor. Thanks to Woody for bringing door prizes. Next month Ken Leith and Don Esch.

Chuck Hunt reported he and Kathy Bennett went to Grant School for Nature Night. Next month will be at Mary Eyre on April 15th. So far there are about 600 kids signed up for the show. The raffle took in \$57 for the scholarship fund. The Gunselman's are having a sale of rock and equipment. Call them to schedule a time to see what is for sale. The meeting was adjourned at 8:33 PM.

Submitted by Kathy Bennett.

WAMS Show HAIKU

Rickreall rock show
"Agates" is the theme
Silica fills cavities
Agatissimo!

- Gene Gangle



Work Day to prepare for the upcoming Rock Show!

Thanks to Jackie for the pics!



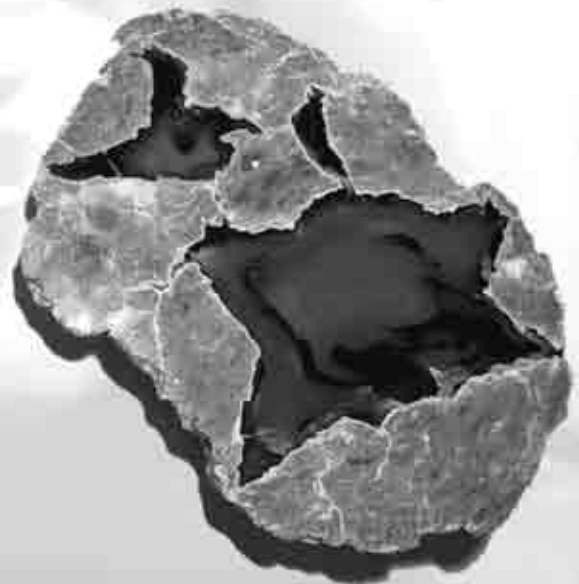
For the April 3 Juniors meeting at 6:30 - 7 PM, we will have a display case available for our students to place the rocks and minerals they wish to share at the show (April 18-20). We will consider how to display each person's rocks, and whatever information the students would like to share with their display. We plan to share a case among several students. Leslie Morganstern will teach the lesson, assisted by Linda Groah and Terri Hoag.

If there are additional Juniors (ages 7-17) who would like to participate, please arrive a little early so we can go over some information you might need. Bring whatever rocks you might like to display.

Also, Joe Van Cura, who helps distribute funds from the Scholarship Committee, passed out some applications and information at the last meeting. He told us that students can apply for a scholarship to a summer camp. Applications need to be in by May 2, and can be for up to \$250. Linda Groah researched some possible camps and will have a list of websites for students who might be interested in a geology or other camp that would qualify for a scholarship. She will also have additional application materials for students who have not already picked one up. One does not have to be in high school to apply for a scholarship for summer camp.

Linda and others in the club were requested to ask club members if anyone is interested in volunteering at a day camp for 100 girls in Corvallis for one day, during the week of July 21-25. Their theme is Geology, and they would like people to give several 30 minute presentations on the fun of rock and mineral collecting, geology, etc. They would like to show specimens that the volunteers can bring. If you are interested, please talk to Linda Groah at the April 3 meeting.

If you have questions, please call Linda at 503-873-6930.



Tiger's eye (also called Tigers eye or Tiger eye) is a chatoyant gemstone that is usually a metamorphic rock that is a golden to red-brown color, with a silky luster. A member of the quartz group, it is a classic example of pseudomorphous replacement by silica of fibrous crocidolite (blue asbestos). An incompletely silicified blue variant is called Hawk's eye.

Cut, treatment and imitation

The gems are usually cut en cabochon in order to best display their chatoyancy.

Red stones are brought about through gentle heat treatment. Dark stones have had their colors improved and been artificially lightened using nitric acid treatments.



Honey-colored stones have been used to imitate the much higher valued cat's eye chrysoberyl (cymophane), but the overall effect is unconvincing. Artificial fiberoptic glass is a common imitation of tiger's eye, and is produced in a wide range of colors. Tiger's Eye mostly comes from South Africa and East Asia.

Tiger iron

Tiger iron is an altered rock composed chiefly of tiger's eye, red jasper, and black hematite. The undulating, contrasting bands of color and luster make for an attractive motif, and it is mainly used for jewelry-making and ornamentation. Tiger iron is a popular ornamental material used in a variety of applications, from beads to knife hilts.

Tiger iron is mined primarily in South Africa and Western Australia. Tiger's eye is composed chiefly of silicon dioxide (SiO₂) and is colored mainly by iron oxide. It is formed by the alteration of crocidolite.

Other forms of tiger's eye

Arizona and California have serpentine deposits in which are occasionally found chatoyant bands of chrysotile fibers. These have been cut and sold as "Arizona tiger-eye" and "California tiger's eye" gemstones. Dark blue-gray fibrous varieties of tiger's eye and hawk's eye is sold under the trade name of Pietersite.

Occurrence

Notable sources of tiger's eye include Australia, Burma, India, Namibia, South Africa, United States, Brazil, Canada, China, Korea, and Spain.

Tourmaline is a crystal boron silicate mineral compounded with elements such as aluminium, iron, magnesium, sodium, lithium, or potassium. Tourmaline is classified as a semi-precious stone and the gemstone comes in a wide variety of colors. The name comes from the Sinhalese word "Turмали" or "Thoramalli" which applied to different gemstones found in Sri Lanka.

History

Brightly colored Sri Lankan gem tourmalines were brought to Europe in great quantities by the Dutch East India Company to satisfy a demand for curiosities and gems. At the time it was not realised that schorl and tourmaline were the same mineral (it was only about 1703 that it was discovered that some colored gems weren't zircons). Tourmaline was sometimes called the "Ceylonese [Sri Lankan] Magnet" because it could attract and then repel hot ashes due to its pyroelectric properties.

Tourmalines were used by chemists in the 19th century to polarize light by shining rays onto a cut and polished surface of the gem.

Crystal structure

Tourmaline belongs to the trigonal crystal system and occurs as long, slender to thick prismatic and columnar crystals that are usually triangular in cross-section. The style of termination at the ends of crystals is asymmetrical, called hemimorphism. Small slender prismatic crystals are common in a fine-grained granite called aplite, often forming radial daisy-like patterns.

Tourmaline is distinguished by its three-sided prisms; no other common mineral has three sides. Prisms faces often have heavy vertical striations that produce a rounded triangular effect. Tourmaline is rarely perfectly euhedral. An exception was the fine dravite tourmalines of Yinnietharra, in western Australia. The deposit was discovered in the 1970s, but is now exhausted. All hemimorphic crystals are piezoelectric, and are often pyroelectric as well.



The Willamette Agate and Mineral Society, Inc.

(WAMS) is a nonprofit organization and an Oregon Corporation, founded November, 1947. WAMS is affiliated with the American Federation of Mineralogical Societies (AFMS), the Northwest Federation of Mineralogical Societies (NFMS), the Oregon Council of Rock and Mineral Clubs, the American Lands Access Association (ALAA), and the Special Congress Representing Involved Bulletin Editors (S.C.R.I.B.E.).

Meetings are held on the first Thursday of each month at 6:30 pm at the Salem Senior Center, 2615 Portland Road NE, in Salem, Oregon. Executive Board meetings are held with upcoming meetings announced at the general meeting, and all members are invited to attend.

WAMS was organized to stimulate interest in the study and collection of agates, minerals, gems, and fossils, and support lapidary work, education, scientific study of natural earth sciences, and charitable purposes within the meaning of Section #501(C)(3) IRS.

WAMS Membership

Membership dues are due by December 31 for the following year. Anyone joining WAMS between January and June pay the full amount. Anyone joining WAMS between July and December pay half the amount. Potential new members are encouraged to attend three meetings as a guest before completing and submitting an application.

Membership Dues

Individual: \$15.00

Couple: \$24.00

Juniors: \$2.50

Guests are welcome and are encouraged to attend WAMS meetings!

2013 Elected Officers

President: David Smith 503-480-6518

Vice President: Jan White

Secretary: Kathy Bennett

Treasurer: Jackie Lord 503-481-5276

Federation Director: Janice VanCura 541-753-2401

Members at Large: Steve Lawrence 503-585-8014

Mark Edwards 541-738-6811

Dan Groah

Tom Robertson

Board Chair: Kristi Edwards 541-738-6811



2013 Committee Chairs

Show Chair: Etheleen Flippo 503-623-4247

Field Trips: Ken Orndorff 503-339-7087

Bulletin Editor: Jeremy Teal 503-508-8031

submit articles to: rockclubnewsletter@gmail.com

Education: Chuck Hunt 503-304-3886

Juniors: Linda Groah 503-873-6930

Display Coordinator: Ed Pyritz

Nameplates: Kathy Bennett 503-363-4974

Oregon Council: VOLUNTEER NEEDED

Programs: David Smith

Property Control: Woody & Jan White

Public Relations: VOLUNTEER NEEDED

Advertising: Susan Appleby 503-391-4221

Publications: Ken Settlemier 541-981-0015

Scrapbook/Historian: Steve Lawrence 503-585-8014

Host/Hostess: Eddie Hopper

Stamps: Aaron Currier 503-385-5649

Sunshine: Eddie Hopper

The Rockhound Rumbings bulletin is published monthly for members of the Willamette Agate and Mineral Society (WAMS). The editor is not responsible for the authenticity of information in articles submitted for publication, nor are the opinions expressed therein necessarily those of the editor or officers of WAMS. Permission to reprint material from this newsletter is granted, provided proper credit is given to WAMS Rockhound Rumbings and the author. Exchange bulletins are welcome.

Advertising Rates

Member:

Non-business - One (1) free ad per year or \$1.00/issue or \$8.00/year. (Business card size or 12 lines or 1/10 page).

Non-member and members with a business:

\$4.00/issue, \$35.00/year (10 issues), or \$17.50 for 1/2 year (5 issues). Same size regulations as above.

Website

www.wamsi.org

Mailing Address

WAMS - P.O. Box 13041, Salem 97309